





SETTING BENCHMARKS IN REAL ESTATE

Spearheading Indian real estate with a forward-thinking approach.

Over 60 million sq. ft. of residential space delivered, and 50 million sq. ft. **more under construction.**

- Recognized for contemporary designs and a commitment to high engineering standards.
- A trusted name in Pune, Mumbai, and Bangalore's real estate landscape.

Pride World City is your trusted partner in creating picture-perfect homes, backed by decades of expertise.





BORN FROM VISION, BUILT ON VALUES

At Pride World City, our values are the foundation of everything we create. They shape our commitment to building a legacy we're proud of.

- Excellence in Quality: Quality is not a choice - it's a commitment. To create elevated living experiences through impeccable planning and execution.
- Innovation in Design and Planning: Our spaces are designed to evolve with you, blending innovation with functionality to meet the dynamic needs of today's families.
- Labour Welfare and Integrity: Our dedication extends beyond construction. We prioritize the well-being of our workforce, ensuring that each hand that builds our projects is valued and supported.
- Commitment to Early Delivery: We strive to deliver on time, every time, with a deep focus on early delivery.

A woman with dark hair, wearing large black sunglasses and a red top, is shown in profile, looking upwards. She is surrounded by lush tropical foliage, including large green leaves and several bright orange flowers. The background is a solid purple color. The text "PICTURE PERFECT Lifestyle BEGINS HERE" is overlaid on the image. "PICTURE PERFECT" and "BEGINS HERE" are in a bold, white, sans-serif font, while "Lifestyle" is in a white, cursive script font.

PICTURE PERFECT *Lifestyle* BEGINS HERE

Welcome to the future of living - where every moment feels like a snapshot of perfection. Discover a home where your lifestyle meets sophistication, where everyday is full of picture-perfect experiences. Let's explore what makes this project stand out and why it's the ultimate destination for modern living in Pune.

Location

WHERE CONNECTIVITY MEETS CONVENIENCE



Charholi, the upcoming urban haven of East Pune, where residents are empowered with ease of access.

- 7 km from Pune International Airport – Perfect for frequent travelers.
- 14 km from Koregaon Park – Close to vibrant urban amenities.
- 1 km from D.Y. Patil School & University – Top educational institutions just minutes away.

Location is a key convenience here

Infrastructure

CRAFTED FOR URBAN EFFICIENCY

Picture yourself in a well-structured, easily navigable neighbourhood.



- Onsite IT Park: A new 3 million sq. ft. IT park within Pride World City will create about 50,000 jobs, connecting residents to growing job opportunities.
- Healthcare: Ajeenkya Healthcare, Sathe Multispecialty Hospital, Indrayani Hospital & Cancer Institute.

- Recreation: Phoenix Market City, Aeromall, Diamond Water Park, and Dighi Hills provide leisure options.

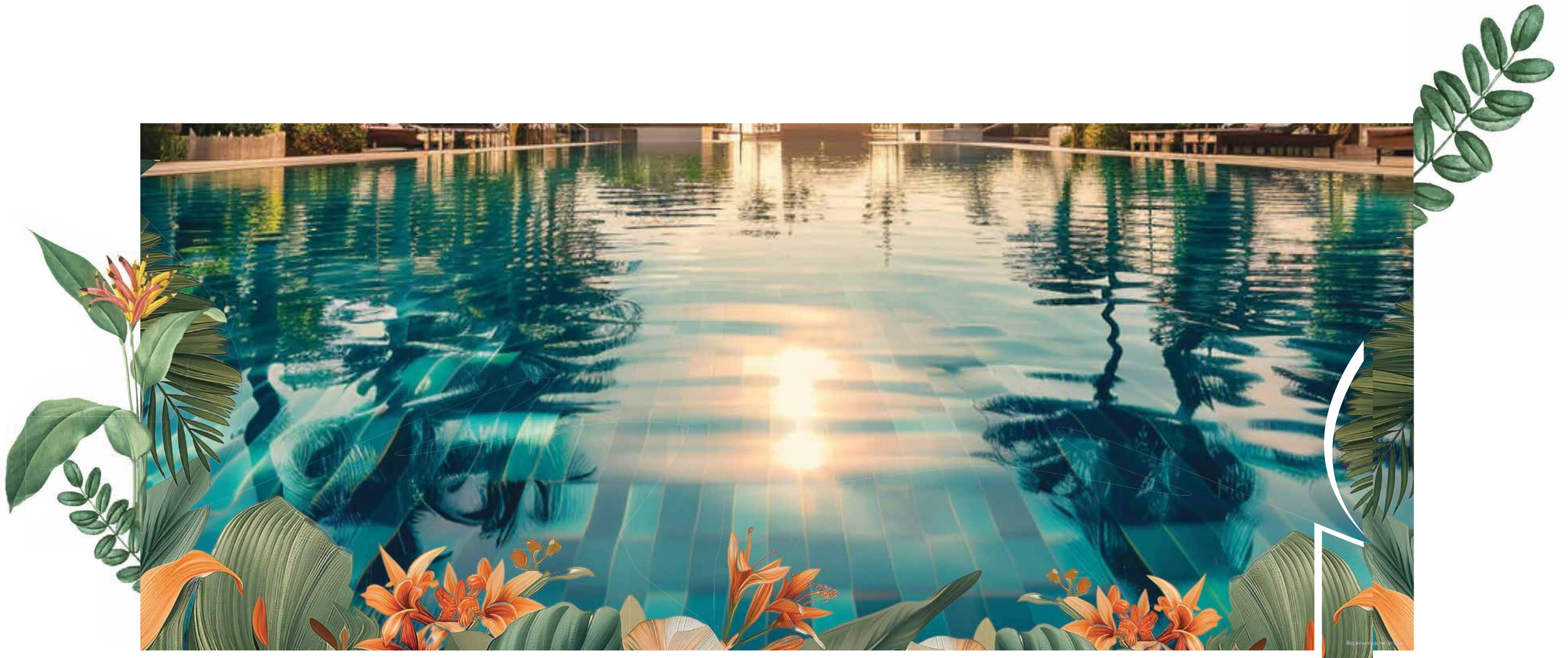
Live in a picture-perfect neighborhood

MORE THAN JUST HOMES— AN ICONIC *Lifestyle*



This project is designed to blend style, comfort, and function into a seamless living experience. With a range of 2,3, and 4.5 BHK homes, crafted to inspire, every inch is a testament to thoughtful design. You get to enjoy a great mix of modern amenities, stunning views, and a vibe that reflects your aspirations.





Curated Amenities

FOR THE PICTURE-PERFECT LIFESTYLE

Enjoy life to the fullest with an expansive list of amenities, including a clubhouse, swimming pool, sports zones, gym, yoga deck, and more. Whether it's indulging in wellness or hosting social gatherings, every experience here is designed to be picture-perfect.

Lifestyle

URBAN, COLOURFUL, AND ENERGETIC

A lifestyle where every moment offers something picture-perfect.

- Meditation plazas and pet parks
- A clubhouse and café lounge designed for social gatherings
- Picture-perfect swimming pools
- Mini golf, box cricket, and pickleball courts

Experience a picture-perfect lifestyle



Designed For The Future,

BUILT FOR TODAY

Our project integrates green spaces, sustainable practices, and cutting-edge technology to offer a lifestyle that's both luxurious and environmentally responsible. With smart home features, energy-efficient designs, and thoughtful innovations, you're stepping into the future every day.





Spaces **THAT SPEAK TO YOU**

Choose from thoughtfully designed 2, 3, and 4.5 BHK homes, each crafted to optimize space, comfort, and style. Explore our range of layouts that cater to your personal preferences and needs, ensuring a home that fits your lifestyle perfectly.





Artist's impression



Artist's impression



MASTER PLAN



“A” SERIES





A Building
2BHK
UNIT PLAN

USABLE CARPET
785 - 795 SQ. FT.



A Building
3BHK
 UNIT PLAN

USABLE CARPET
 1059 - 1070 SQ. FT.



A Building

3BHK-XL

UNIT PLAN

USABLE CARPET

1161 SQ. FT.

1059 - 1070 SQ. FT.

SPECIFICATIONS

Flooring & Tiles

- 800mm X 1600mm Vitrified Tiles Flooring in all other rooms.
- Wooden flooring in Master Bedroom
- Matt finish Tiles in All Bathroom Flooring
- Dado up to 7ft Height in bathroom
- Ceramic wooden finish tile for all terrace attached with bedroom and living room
- Dry balcony - Matt finished tile flooring and wall cladding
- Designer Tiles Flooring In each Floor Lobby.

Kitchen

- Granite Kitchen Platform with S.S. Sink & with provision for Aqua guard inlet
- Semi Modular Kitchen cabinet below platform & top unit above platform. And cabinets provided below the opposite side service counter
- 4 Gas Hob & Chimney of Faber/ Equivalent
- Piped Gas System of MNGL for each flat.
- Inlet outlet for Washing Machine

Bathroom Fittings

- Branded C.P. Fittings in all Bathrooms (Jaquar / Grohe).
- Branded Sanitary Wares in all Bathrooms (Toto / Kohler).
- Fixed glass partition for shower area in Master Toilet

Structure & Wall

- RCC Structure in Alu form.
- Partial walls in AAC Block work.
- Internal walls will be finished in Gypsum.

Terrace & Balcony

- Glass Railing for balconies & attached terraces (Except Dry Balcony)
- PVC wooden finish false ceiling in balconies.

Doors & Windows

- Veneer Finished & Melamine Polished Main Doors for all Flats.
- Laminate doors for all bedrooms.
- Both Side Laminated Doors for all Toilets.
- Branded fittings for all Doors.
- Aluminium windows with aluminium / PVC mosquito nets are in each flat.
- Toilet Windows : Aluminum Louvered / Openable Windows with provision for Exhaust Fan.
- M.S. Railing from inside of Flat for Aluminum Windows (Excluding Toilet). Up to 1.20 m Height From Floor Finish Level.
- Tinted Glass for Aluminium windows

Electrical Fittings

- Concealed Copper Wiring With Circuit Breakers.
- Branded Electrical Switches in all Flats. (Le Grand or Equivalent)
- Provision of electrical point for Inverter.
- TV and Telephone points in Living Room & All Bedrooms.
- Provision of A.C Point In All Bed Rooms & Living Room.
- Automatic Lifts with SS finished car from inside.
- Fire Fighting System inside the Flats. .
- Smoke Detection Alarm System inside the Flat.
- Fire resistant doors for Fire Staircase.

Extra Misc- New Age Safety and Convenience

- Home Automation Switches / Touchscreen Main Switches in all rooms
- Digital Lock on main door - Yale or equivalent
- Video Door Phone with Color Screen In each Flat.

Paints

- Oil Bound Distemper Paint For Internal Walls & Ceiling.
- Oil Paint to Window Railings.
- Texture with Acrylic paint to exterior walls.



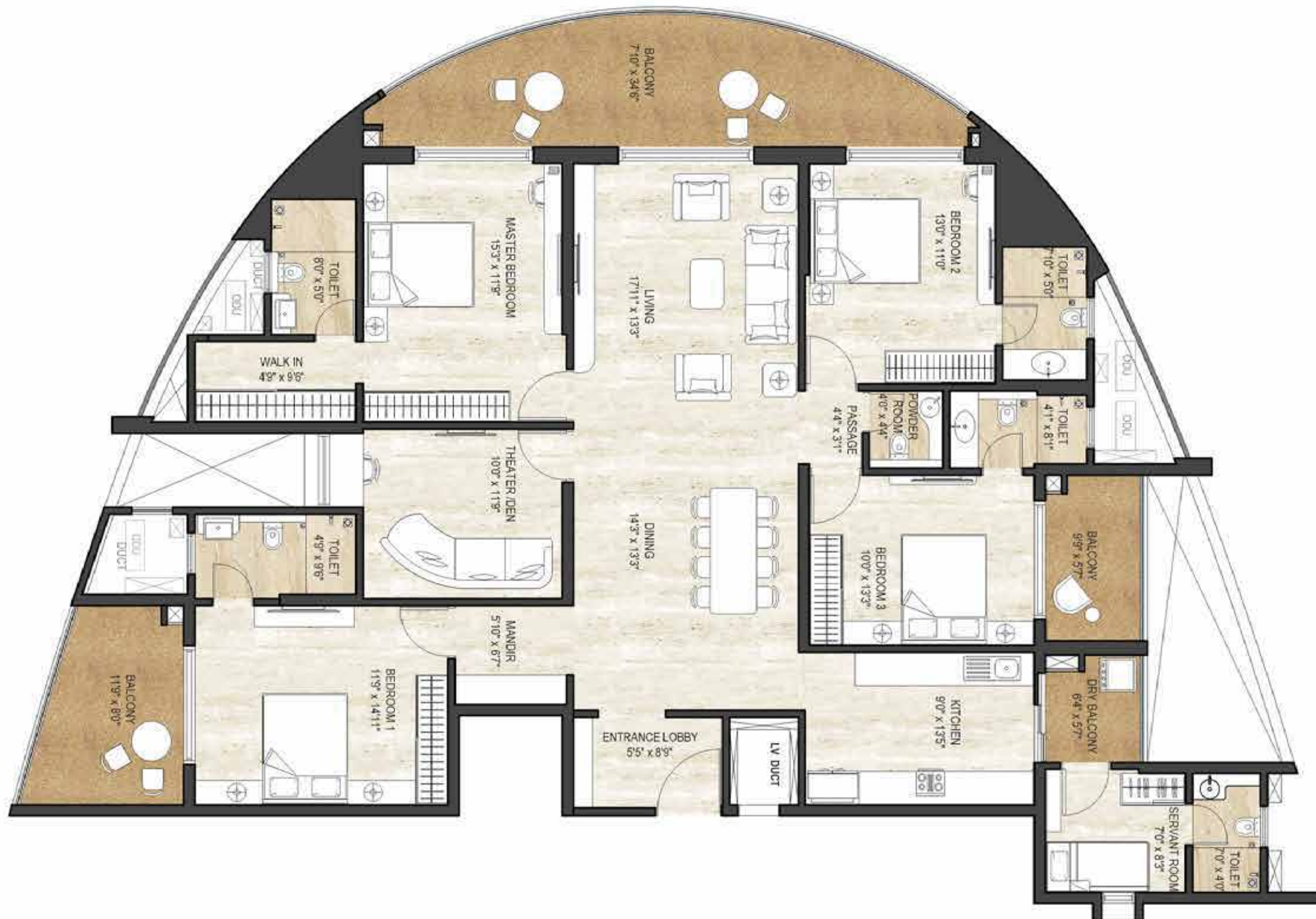
“B” SERIES





B Building
3BHK
 UNIT PLAN

USABLE CARPET
 1437 - 1486 SQ. FT.



B Building
4.5BHK
 UNIT PLAN

USABLE CARPET
 2260 SQ. FT. SQ. FT.

SPECIFICATIONS

Flooring & Tiles

- 1200mm X 1800mm Vitrified Tiles Flooring in all other rooms.
- Wooden flooring in Master Bedroom
- Matt finish Tiles in All Bathroom Flooring
- Dado up to 7ft Height in bathroom
- Ceramic wooden finish tile for all terrace attached with bedroom and living room
- Dry balcony - Matt finished tile flooring and wall cladding
- Designer Tiles Flooring In each Floor Lobby.

Kitchen

- Granite Kitchen Platform with S.S. Sink & with provision for Aqua guard inlet
- Semi Modular Kitchen cabinet below platform & top unit above platform. And cabinets provided below the opposite side service counter
- 4 Gas Hob & Chimney of Faber/ Equivalent
- Piped Gas System of MNGL for each flat.
- Inlet outlet for Washing Machine

Bathroom Fittings

- Branded C.P. Fittings in all Bathrooms (Jaquar / Grohe).
- Branded Sanitary Wares in all Bathrooms (Toto / Kohler).
- Fixed glass partition for shower area in Master Toilet

Structure & Wall

- RCC Structure in Alu form.
- Partial walls in AAC Block work.
- Internal walls will be finished in Gypsum.

Terrace & Balcony

- Glass Railing for balconies & attached terraces (Except Dry Balcony)
- PVC wooden finish false ceiling in balconies.

Doors & Windows

- Veneer Finished & Melamine Polished Main Doors for all Flats.
- Laminate doors for all bedrooms.
- Both Side Laminated Doors for all Toilets.
- Branded fittings for all Doors.
- Aluminium windows with aluminium / PVC mosquito nets are in each flat.
- Toilet Windows : Aluminum Louvered / Openable Windows with provision for Exhaust Fan.
- M.S. Railing from inside of Flat for Aluminum Windows (Excluding Toilet). Up to 1.20 m Height From Floor Finish Level.
- Tinted Glass for Aluminium windows

Electrical Fittings

- Concealed Copper Wiring With Circuit Breakers.
- Branded Electrical Switches in all Flats. (Le Grand or Equivalent)
- Provision of electrical point for Inverter.
- TV and Telephone points in Living Room & All Bedrooms.
- Provision of A.C Point In All Bed Rooms & Living Room.
- Automatic Lifts with SS finished car from inside.
- Fire Fighting System inside the Flats. .
- Smoke Detection Alarm System inside the Flat.
- Fire resistant doors for Fire Staircase.

Extra Misc- New Age Safety and Convenience

- Home Automation Switches / Touchscreen Main Switches in all rooms
- Digital Lock on main door - Yale or equivalent
- Video Door Phone with Color Screen In each Flat.

Paints

- Oil Bound Distemper Paint For Internal Walls & Ceiling.
- Oil Paint to Window Railings.
- Texture with Acrylic paint to exterior walls.



Project Features

DESIGNED TO IMPRESS

This upcoming project is about offering an exceptional way of living, where each feature has been thoughtfully integrated to enhance your quality of life.



Swimming Pool

- Pool Deck
- Kids pool with slides
- Family lap pool
- Jacuzzi Health Pool



Clubhouse

- Gym
- Multiple Purpose Hall
- Indoor games



Sports Facilities

- Futsal
- Box Cricket
- Mini Golf
- Pickleball



Garden & Lawns

- Amphitheater
- Swing Garden
- Chit-chat Plaza
- Multiple purposes Lawn
- Jogging track



New- Age Amenities

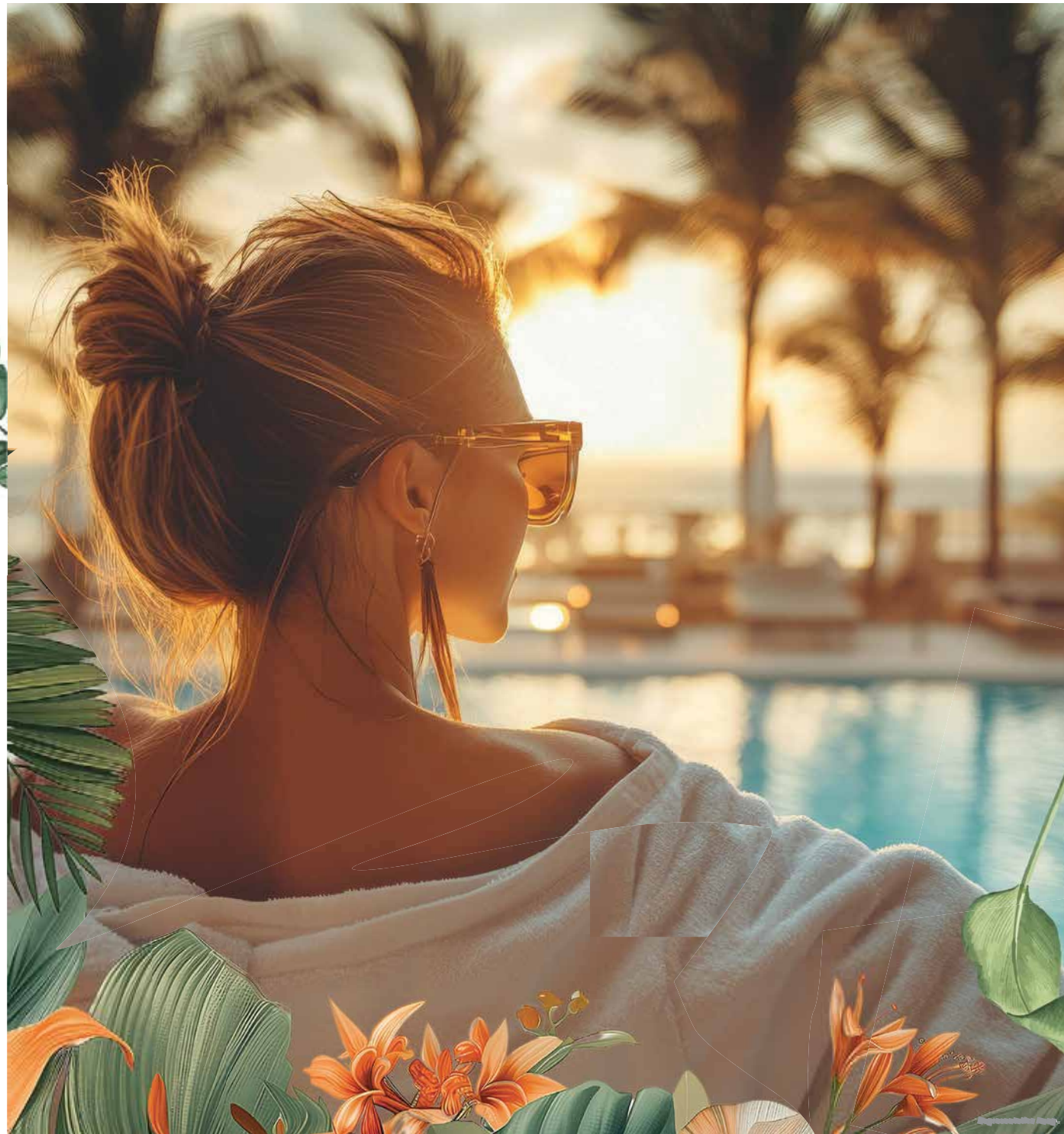
- Creche
- Creche Garden
- Cafe
- Lounge



Senior Citizen Area

- Yoga Deck
- Aroma Garden
- Amphi-Seating
- Temple
- Meditation Plaza

A project where every feature creates a picture-perfect living experience



PICTURE-PERFECT *Luxury*

Offering you the perfect blend of value and luxury. With limited-time festive offers and exclusive pricing, now is the best time to secure your picture-perfect home. Discover attractive finance options and make your dream lifestyle a reality today.





YOUR PICTURE-PERFECT LIFE Awaits

Why wait to live the life you've always dreamed of?
This is your opportunity to
Picture-Perfect lifestyle right
Schedule your site visit



FOR MORE INFORMATION

WEBSITE : www.pride-world-city.com | CONTACT NO. : +9102246180576